

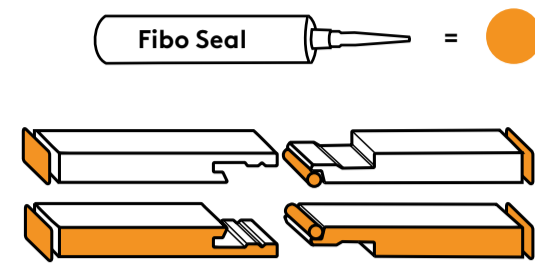
Installation North America only



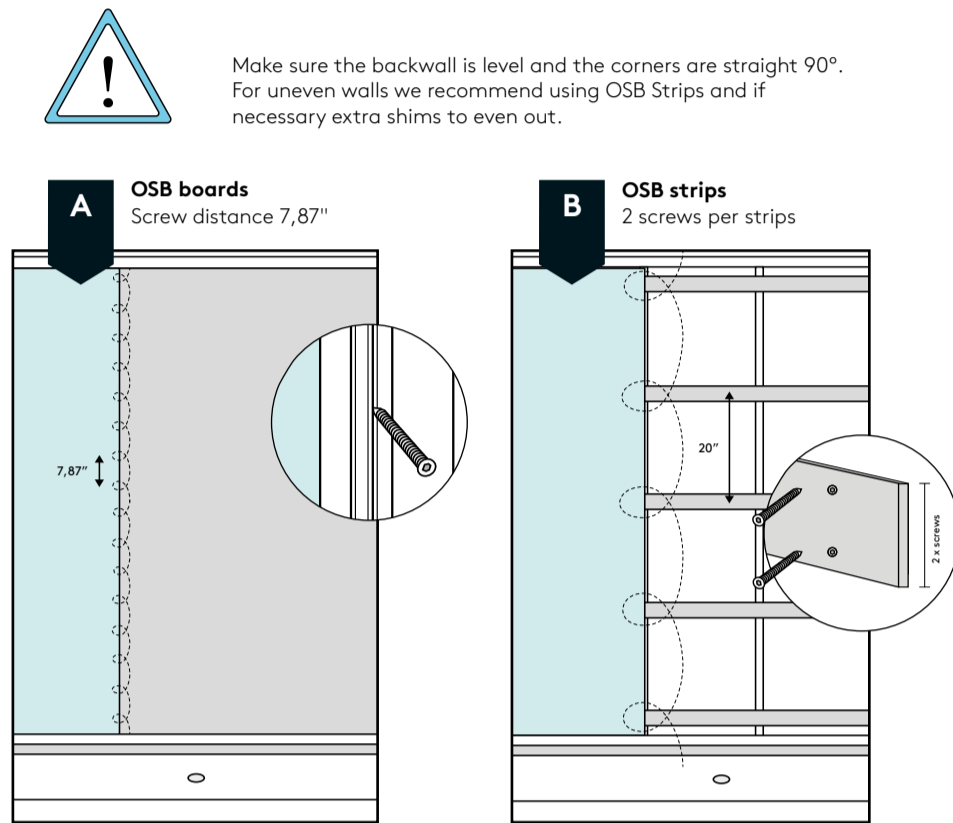
For full installation videos of screwing on gluing the panels scan QR code or visit fibosystemusa.com

HOW TO SEAL FIBO WALL PANELS

For waterproof system, apply Fibo Seal as shown. All cut surfaces, click-joints and bottom edge of the panel must be sealed with Fibo Seal, including drilled holes for pipe penetrations. It is not mandatory to use sealant on cut surfaces outside the wet zone area, but to reduce the risk of joints cracking when drying out it should be used in all joints. For best results when sealing base profiles, internal corner profiles, and other visible joints, it is recommended to use masking tape. Make sure to clean all exposed surfaces before sealing. Incorrect installation according to this installation manual will void your warranty and terms of claim. Use Fibo Seal Remover and Fibo Wipes to remove excessive sealant. Film from cleaning accessories must be removed immediately from panel surface.

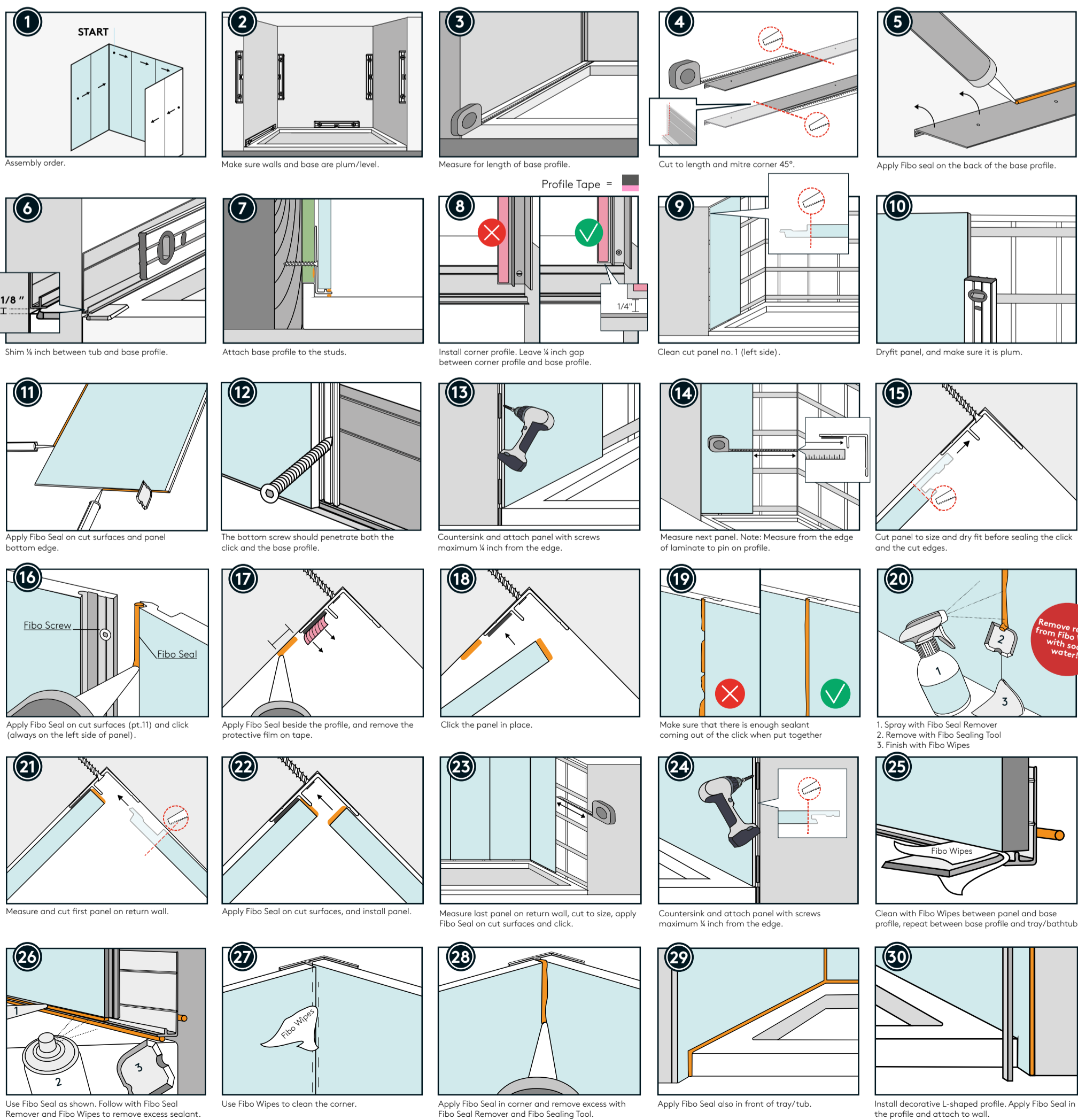


1 CHOOSE PREFERRED BACKWALL

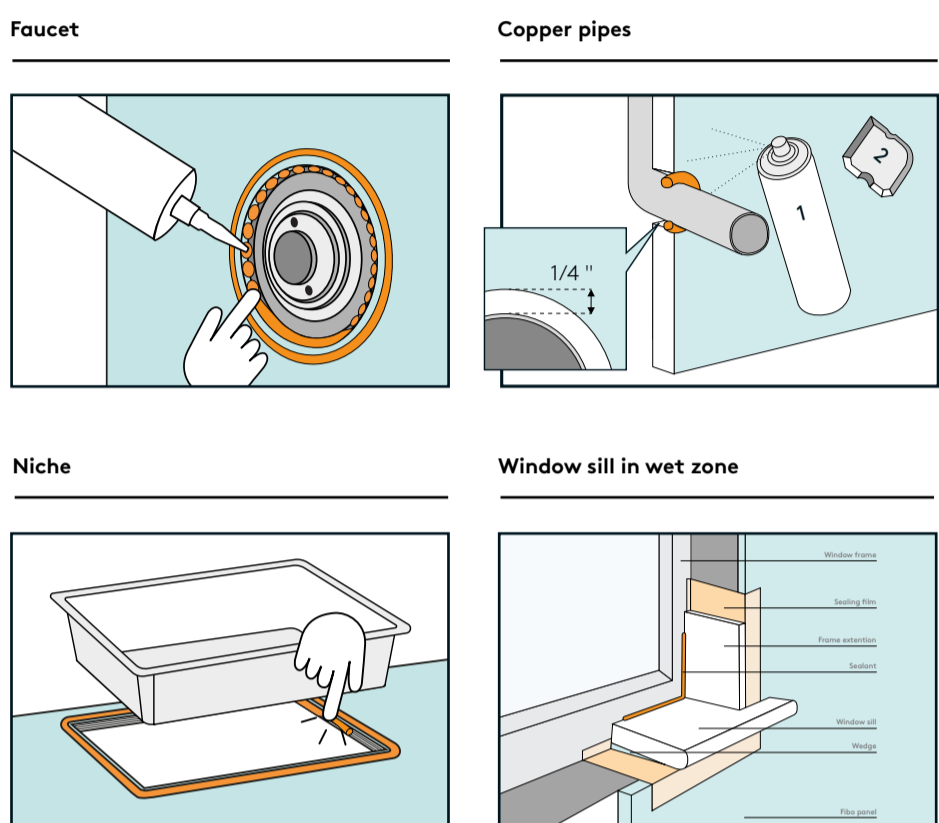


WARNING: This product can expose you to chemicals including formaldehyde and acetaldehyde, which is known to the State of California to cause cancer. For more information, go to www.P65Warnings.ca.gov
WARNING: Fumes Hazard: The fumes from the Fibo Seal Remover used by the installer can be harmful if used in an unventilated room. Always work in a well-ventilated area. To keep the area well-ventilated, open windows and use exhaust fans. If adequate ventilation is not achievable or practical, use respiratory protective equipment.

3 ALCOVE - STANDARD WALLPANEL



2 FAUCETS, NICHES, PIPE PENETRATIONS AND WINDOW SILLS



Wall panel Veggpanel

READ BEFORE OPENING PACKAGE!

Storage | Lagring
Keep panels dry stored and flat in package until installation.
Lagre panelene tørt og liggende i emballasjen frem til monteringen.

Min. 72 hours | Min. 72 timer
Store the panels flat in their packaging at normal room conditions for at least 72 hours (longer if previously stored in a cold area). The relative humidity (RH) must be between 50% and 60% before and during installation. If RH after installation rises above 60% or falls below 50%, joint opening or bowing outside tolerance may occur.
Oppbevar panelene flatt i emballasjen under normale romforhold i minst 72 timer (lenger hvis de har vært lagret kaldt). Relativ luftfuktighet (RF) i rommet må være mellom 50 % og 60 % før og under monteringen. Hvis RF etter monteringen overstiger 60 % eller faller under 50 %, kan det oppstå gliper/kuving utenfor toleransen.

Visual control | Visuell kontroll
Colourmatch and check for flaws before installation.
Kontroller farge og sjekk for andre feil før monteringen.

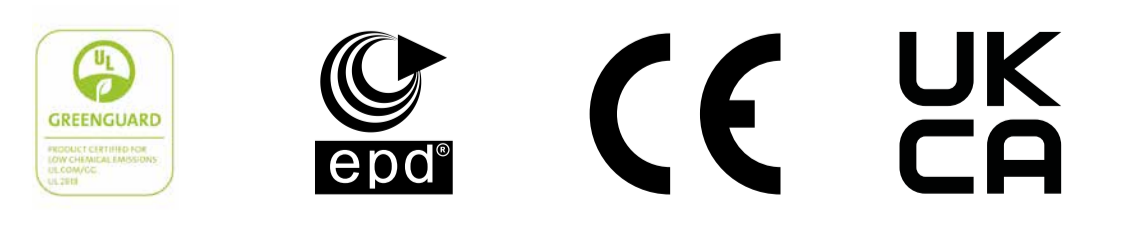


Walls built for life

To ensure that your walls are durable and will last for decades, Fibo wall panels are made from a plywood core layered between a balancing layer and a decorative high pressure laminate that is easy to clean and maintain. Fibo Aqualock makes the installation easy and provides a consistent result. Please visit our webpage for cleaning and maintenance guidance of the system



For å sikre holdbarhet på dine vegger i flere tiår, er Fibo veggpanel produsert med en kjerne av kryssfiner mellom balanselaminat i bakkant og et dekorativt høytrykkslaminat i front og som er enkelt å rengjøre og vedlikeholde. Fibo Aqualock gir enkel monteringen og et varig resultat. Besøk nettsiden for instruksjon om Drift, Vedlikehold og Rengjøring (FDV)



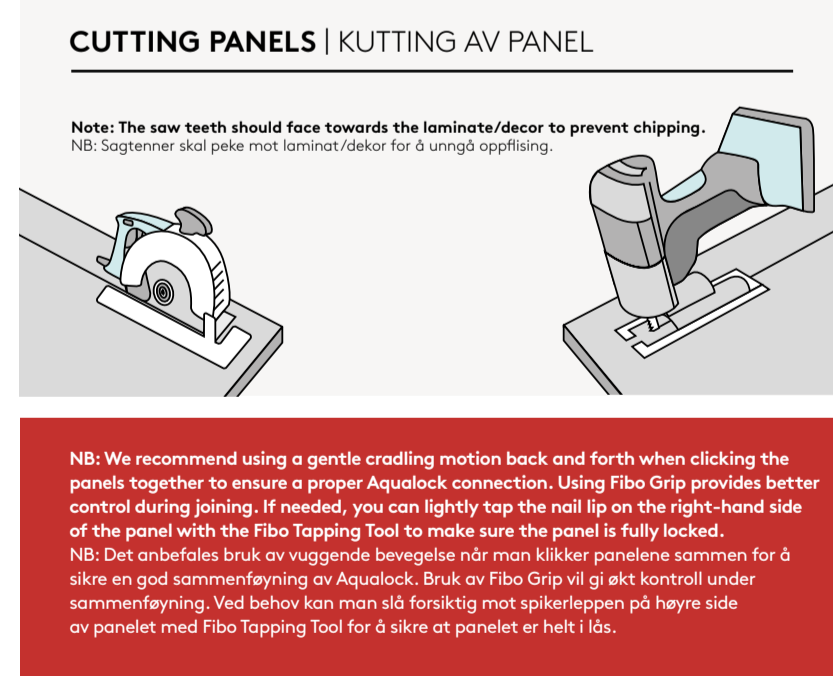
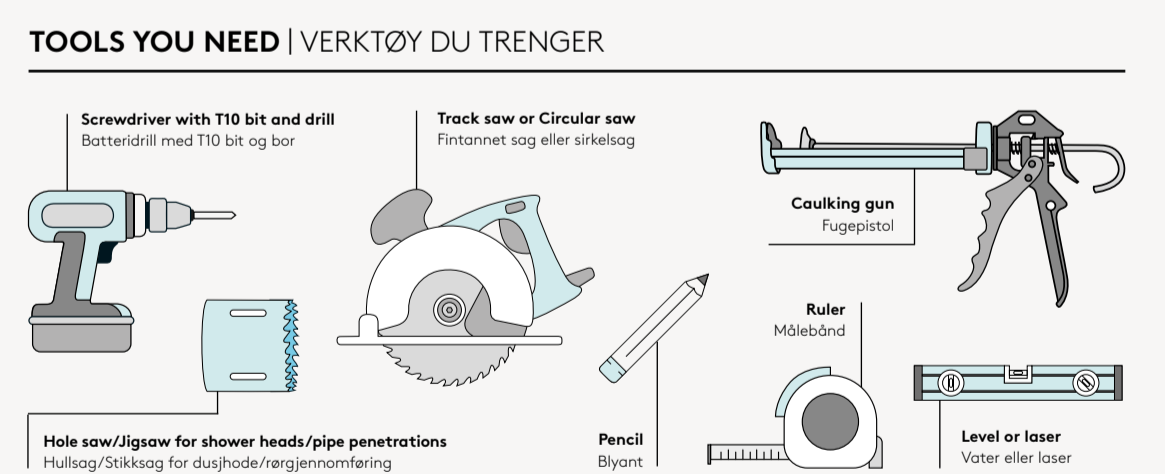
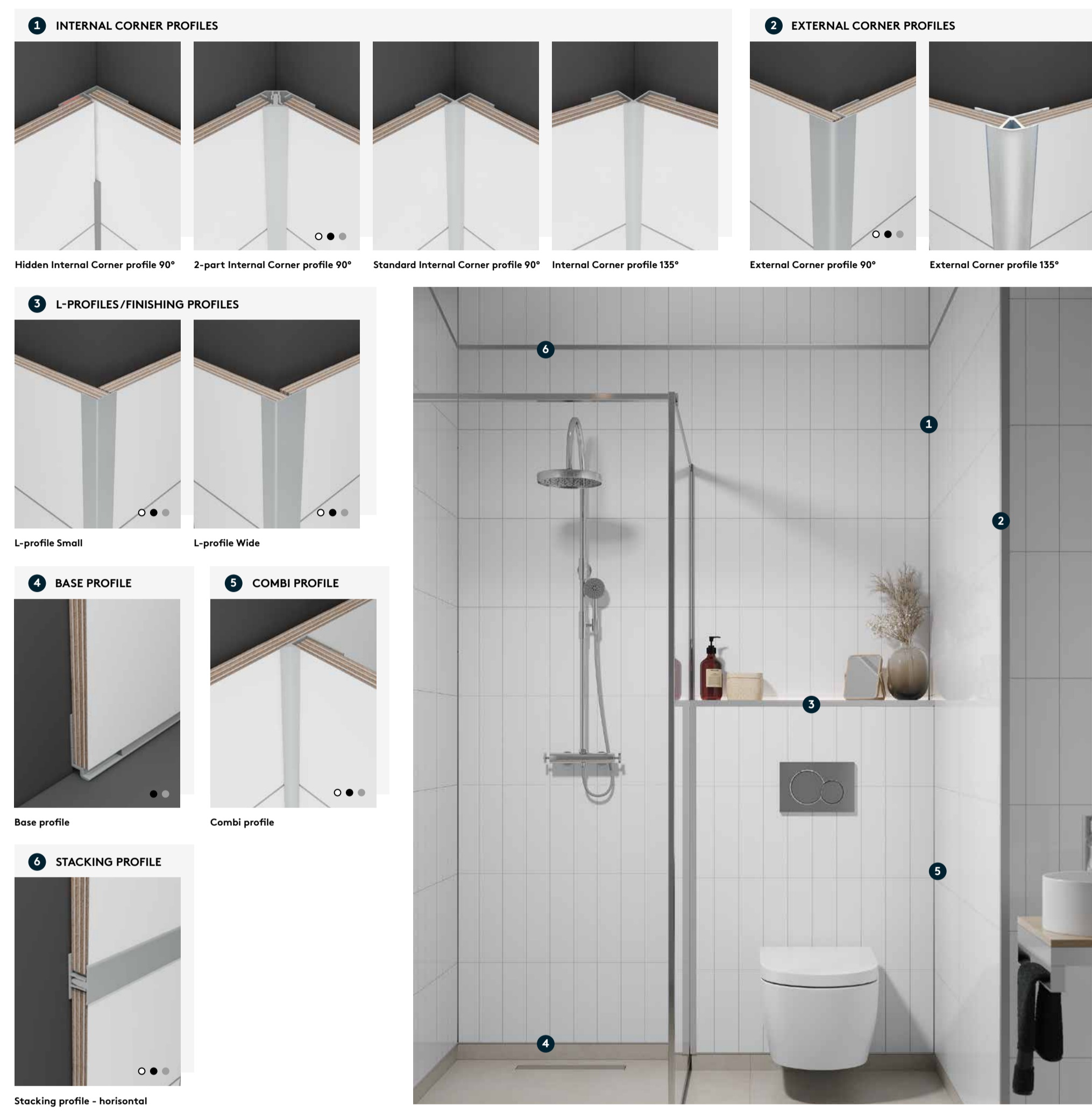
Inspiration and installation videos at fibosystem.com / E-mail: info@fibosystem.com

FIBO ACCESSORIES | FIBO TILBEHØR

Fibo replaces vapor barrier when all joints are sealed.
Fibo erstatter dampspærre på yttervegg når alle overganger er forsejlet.



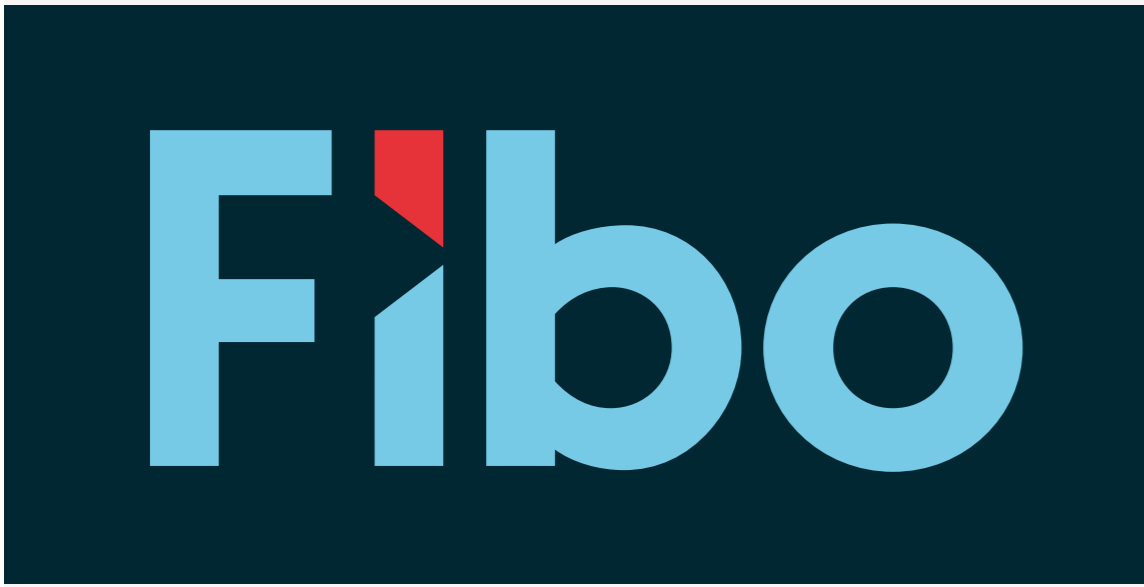
Remove residue from Fibo Wipes immediately with soap water!
Vask bort rester fra Fibo Wipes umiddelbart med såpevann!



CLEANING & MAINTENANCE | RENGJØRING & VEDLIKEHOLD
Extend the life of the sealant by correct cleaning, in accordance with "Cleaning & Maintenance" documents at fibosystem.com. In particular, sealant in the base profile and hidden internal corner profile should be cleaned regularly. If the sealant becomes brittle or damaged over time, it must be treated immediately.
Følg fugemassens levetid ved korrekt rengjøring. I henhold til FDV på Fibo.no. Spesielt fugemasse i sokkelprofil og skjult innvendig hjørne for fugging bør rengjøres regelmessig. Hvis fugemasse blir sprø eller skadet over tid, må den behandles umiddelbart.
A moist Fibo Sponge can be used on particularly difficult surfaces stains. Follow the instructions for use on the product's packaging.
Fuktet melaminisvamp (Fibo Sponge) kan brukes på særlig vanskelige flekker. Følg bruksanvisning på produktets emballasje.

- www.fibosystem.com
- www.fibo.no
- www.fibo.se
- www.fibosystemusa.com
- www.fibo.co.uk
- www.fibosystem.fi

For more information and warranty conditions. For mer informasjon og garantibetingelser.



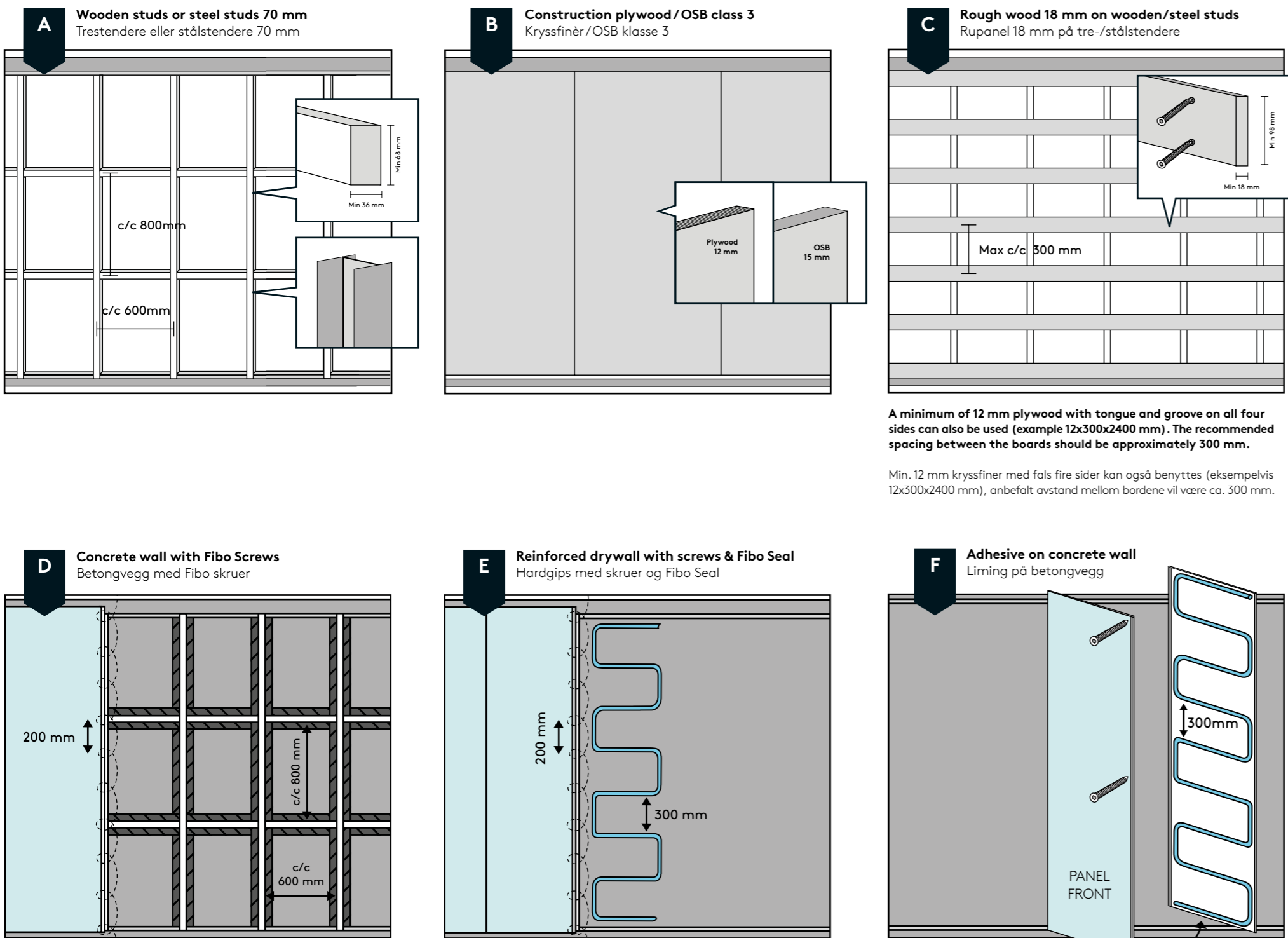
Installation steps Monteringssteg

FIBO SEAL MUST BE USED IN ALL PANEL JOINTS (INCLUDING DRY AREA) TO REDUCE THE RISK OF JOINTS CRACKING OVER TIME. FIBO SEAL SKAL BENYTTES I ALLE PANELSKJØTER (INKLUDERT TØRRE SONER) FOR Å REDUSERE RISIKO FOR AT TØRKESPREKKER OPPSTÅR OVER TID.

Extra support in backwall must be used if heavy objects such as cabinets, toilets, shower seats, support handles or similar is to be installed. Flatness tolerance: Maximum flatness deviation of +/-2 mm/2 meters. There is no need for extra membrane behind our wall panels.

Benytt ekstra støtte i bakvegg dersom det skal monteres tunge gjenstander som skap, toalett, dusjsete, støttehåndtak eller lignende. Planhetetoleranse: Maksimalt planhetstolvik på +/-2 mm/2 meter. Det er ikke behov for damppære eller membran bak veggpanelet.

1 BACKWALL OPTIONS VELG RIKTIG BAKVEGG

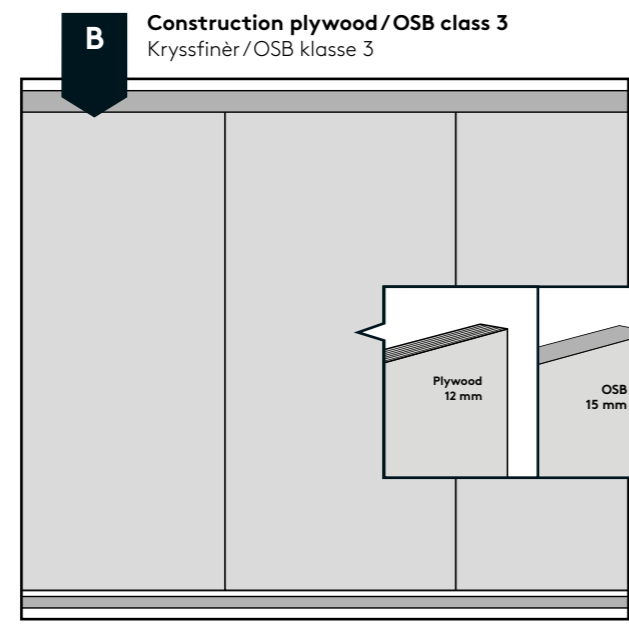


For an exterior wall below ground level, external insulation, draining material, and moisture protection on the outside are necessary. Ensure that the inside of the wall is dry before installation. In newly constructed buildings, it may be necessary to wait until the concrete has dried to a relative humidity of no more than 85%.

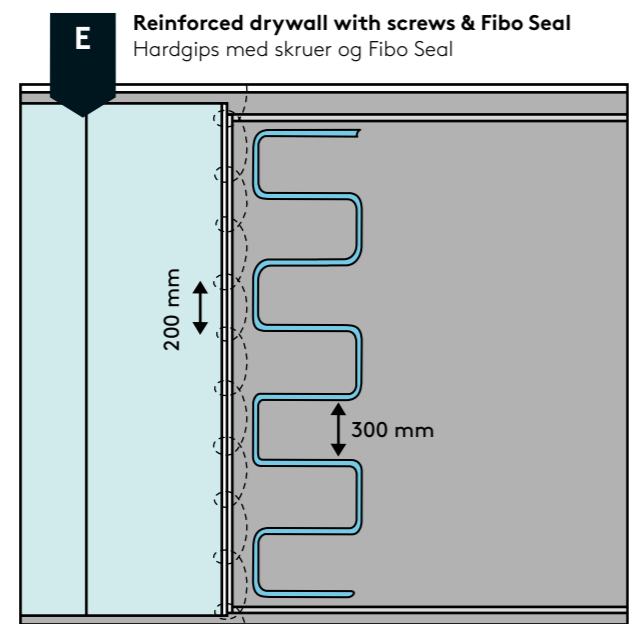
When mounting on concrete or masonry walls using screws, the framework should consist of vertical studs with a c/c spacing of 600 mm and horizontal battens with a c/c spacing of 600 mm, both with the wide side facing the wall. Studs and battens should have a minimum dimension of 23 x 48 mm. A coplanar-breaking layer behind the studs is required if using wooden studs.

For an exterior wall under backfill, or det nedvendig med utvendig isolering, drenerende materiale og fuktstopping på utsiden. Sørg for at veggens innside er tørr før monteringen. I nyoppførte bygg kan det være nødvendig å vente til betongen har tørket til en relativ fuktighet på maksimalt 85%.

Ved montering på betong- eller murvegger med skruer, bør stenderverket bestå av vertikale stendere med c/c 600 mm og horisontale lekter med c/c 600 mm, begge med bred side mot vegg. Stendere og lekter skal ha dimensjon min. 23 x 48 mm. Et kappløst brytende sjikt bak stenderne er nødvendig hvis du bruker trestendere.



A minimum of 12 mm plywood with tongue and groove on all four sides can also be used (example 12x300x2400 mm). The recommended spacing between the boards should be approximately 300 mm. Min. 12 mm kryssfiner med fols fire sider kan også benyttes (eksempelvis 12x300x2400 mm), anbefalt avstand mellom bordene vil være ca. 300 mm.

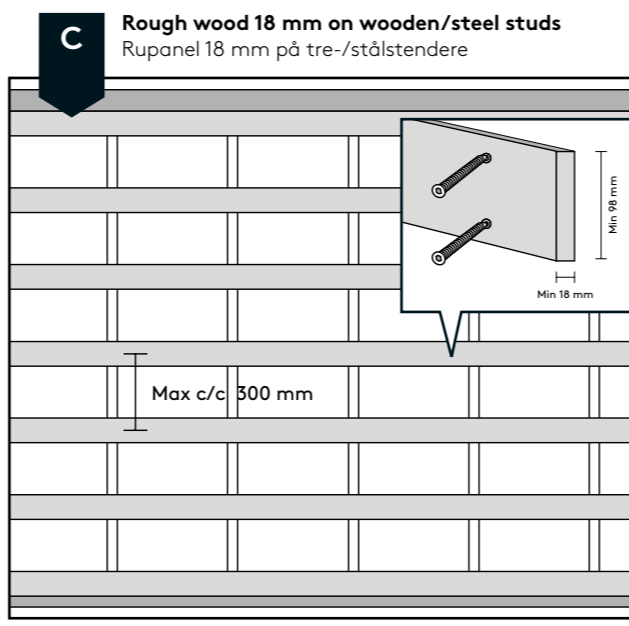


When installing wall panels directly onto an example impact-resistant drywall, always use a combination of Fibo Seal and screws. After dry fitting the panel, apply Fibo Seal according to the drawing (mark the panel's position for accurate application of Fibo Seal on the wall).

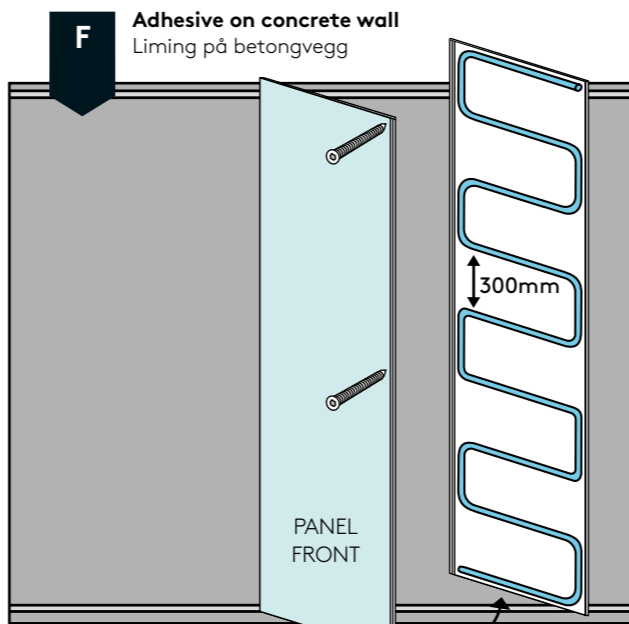
Follow the standard screw spacing of approximately 200 mm between each screw. Avoid tightening the screws too hard or too quickly, as this can damage the thread path and reduce holding capacity. It is recommended to use Fibo Screws of 3.0 x 20 mm, but wood screws of 3.0 x 20 mm (countersunk, to fit the screw lip) can also be used. Follow the other installation steps as described in the installation instructions.

Ved montering direkte på hardgips skal det alltid brukes en kombinasjon av Fibo Seal og skruer. Etter tenning av panelet påføres Fibo Seal i henhold til tegningen (merk av panelets posisjon for nøyaktig påføring av Fibo Seal på vegg).

Følg standard skrueravstand på ca. 200 mm mellom hver skruer. Unngå å stramme skruene for hardt eller raskt, da dette kan skade gjengebanen og redusere festeverken. Det anbefales å bruke Fibo skruer på 3,0 x 20 mm, men tre skruer på 3,0 x 20 mm fra f. eks. Easycan også benyttes. Følg ellers de øvrige monteringsstegene beskrevet i monteringsanvisning.



A minimum of 12 mm plywood with tongue and groove on all four sides can also be used (example 12x300x2400 mm). The recommended spacing between the boards should be approximately 300 mm. Min. 12 mm kryssfiner med fols fire sider kan også benyttes (eksempelvis 12x300x2400 mm), anbefalt avstand mellom bordene vil være ca. 300 mm.



When gluing panel to a concrete wall, make sure the back wall is dry (RH<85%/CM<2%), even and dust free. Place panel into position and secure with pressure. Make sure to screw the first panel as shown. In the UK it is allowed to glue on tiles. Check national building regulations for more.

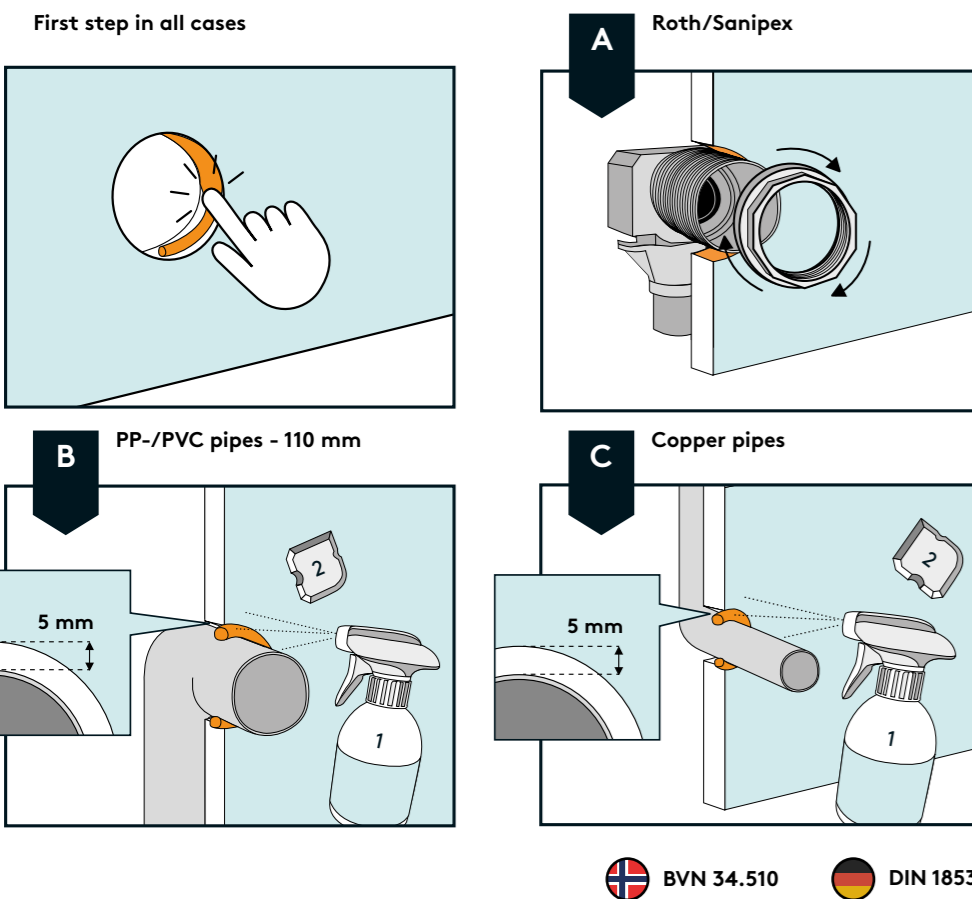
Fibo Seal in combination with screws, or glue with initial grab. Make sure to screw the first panel as shown.

Ved liming av panel til vegg av betong, sørg for at veggens er tørr (RH<85%/CM<2%), jevn og rengjort. Husk skruer på første panel - se figur.

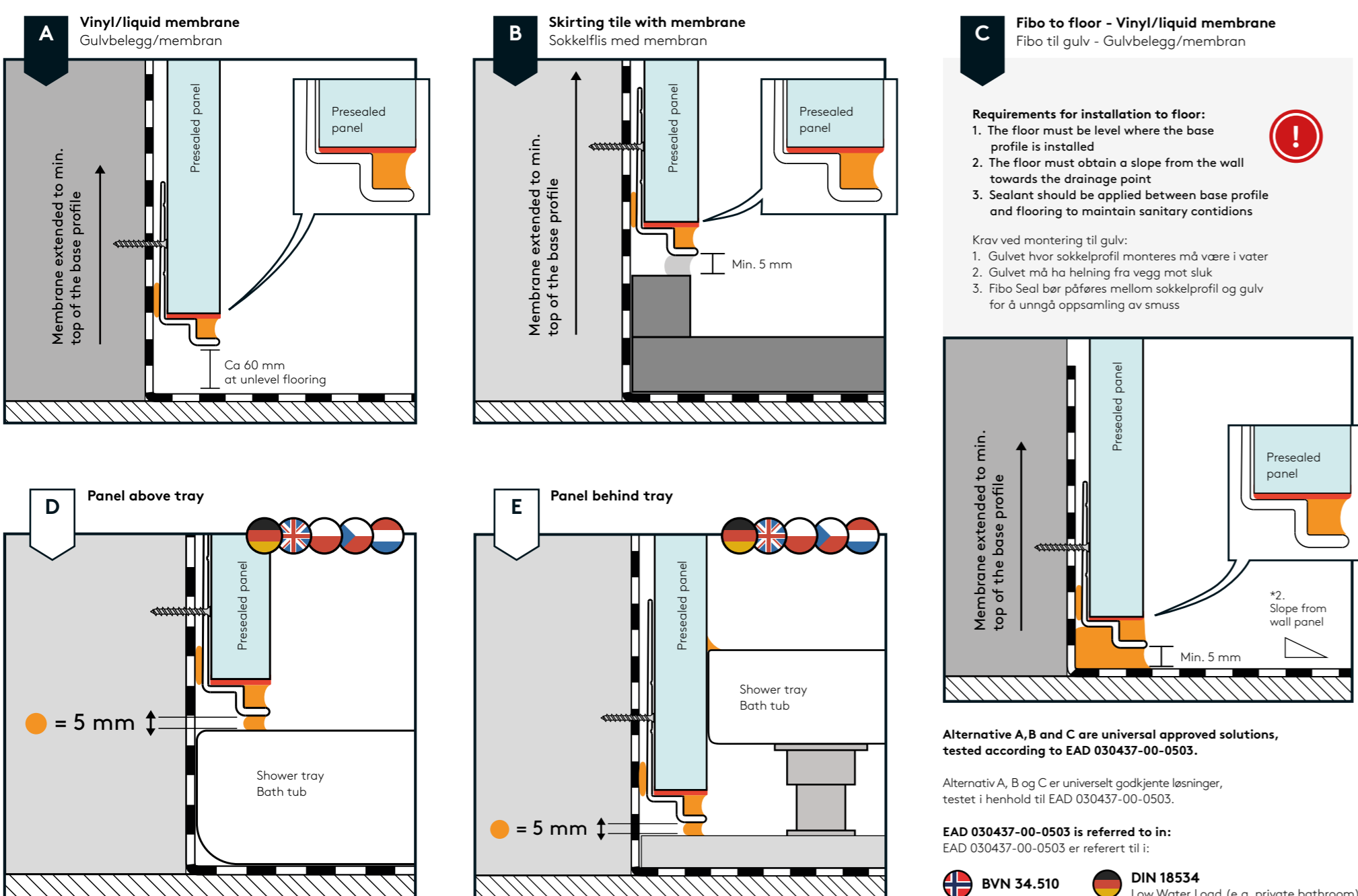
2 SOLUTIONS FOR APERTURES FOR PIPES LØSNINGER FOR RØRGJENNOMFØRING

Cutting surfaces must be sealed when drilling holes for pipe penetration. For complete installation guidance, follow the wall box producer's instructions. The ones illustrated are EAD 030437-00-0503 approved systems. Approval for PP- and copper pipes is documented through SINTEF Technical Approval 2289. Note: There are certain types of plastic pipes on which Fibo Seal and other sealants do not adhere. In such cases, they must be primed, or a clamping ring/manschette must be used to seal around the penetrations.

Kuttflater skal forsegles ved hulltapping til rørgjennomføring. For fullstendig monteringsanvisning av EAD 030437-00-0503 godkjente løsninger, følg veggkassens produsentens anvisninger. Godkjenning av PP- og kobberrør er dokumentert i SINTEF Teknisk Godkjenning 2289. OBS: Det finnes enkelte typer plastlør der Fibo Seal og annen fugemasse ikke holder, i slike tilfeller må de primers eller det må benyttes klemring/manschette for å tetne rundt gjennomføringer.



4 CHOOSE TRANSITION TO FLOOR MEMBRANE AVSLUTNING MOT GULVMEMBRAN

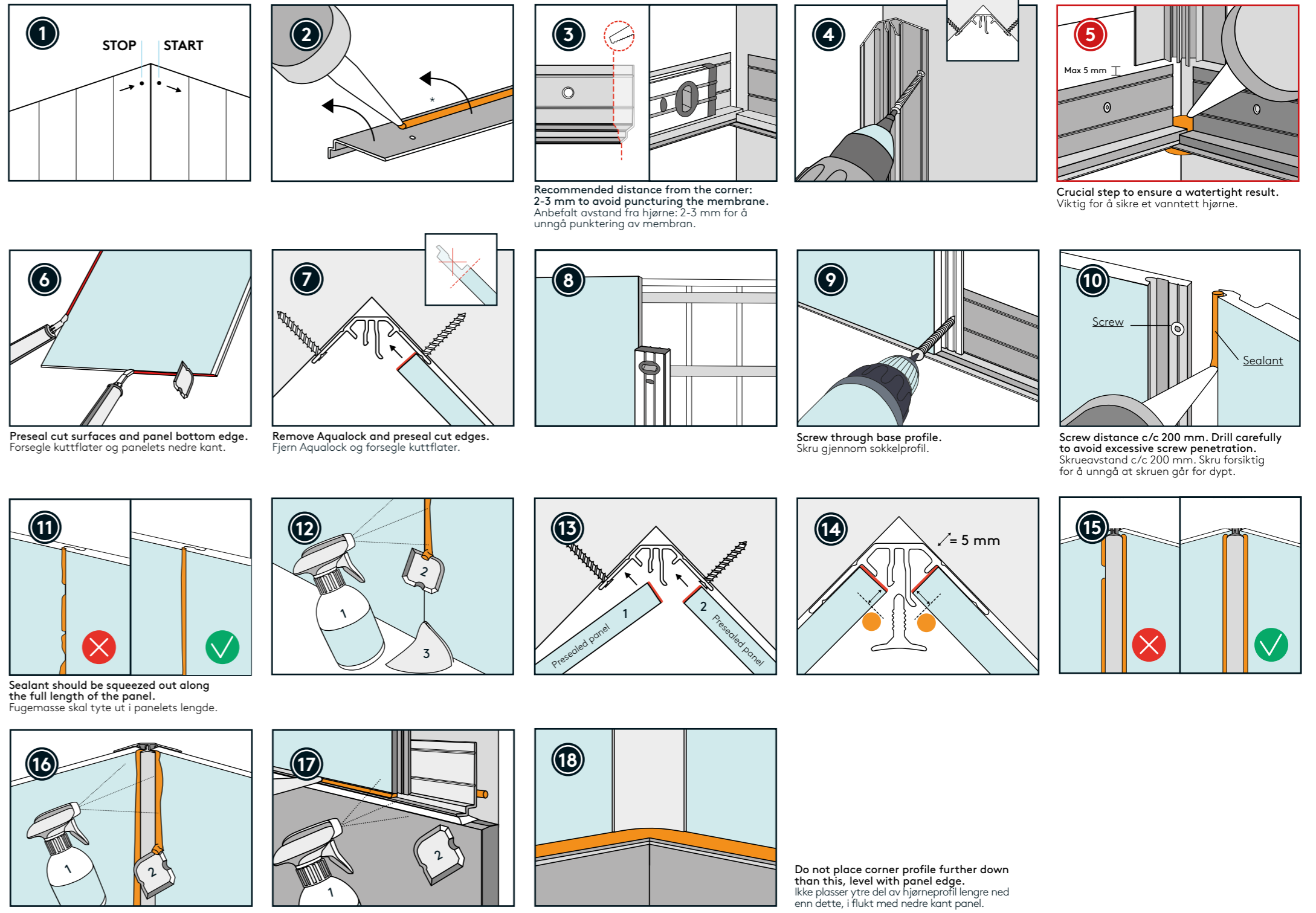


Requirements for installation to floor: 1. The floor must be level where the base profile is installed. 2. The floor must obtain a slope from the wall towards the drainage point. 3. Sealant should be applied between base profile and flooring to maintain sanitary conditions. Krav ved montering til gulv: 1. Gulvett hvor sokkelprofil monteres må være i vater. 2. Gulvett må ha helling fra vegg mot sluk. 3. Fibo Seal bør påføres mellom sokkelprofil og gulv for å unngå oppsamling av smuss.

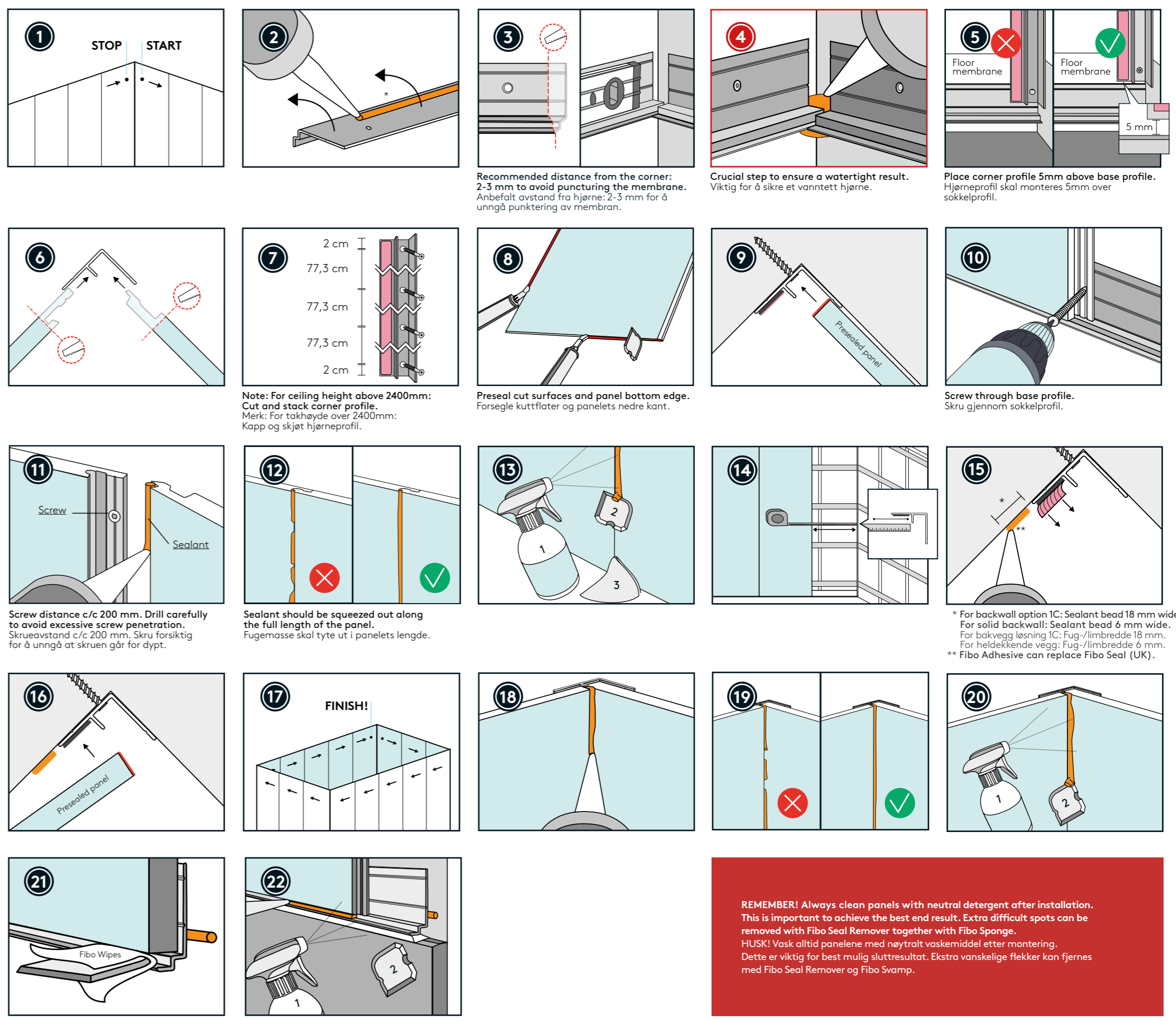
Alternative A, B and C are universal approved solutions, tested according to EAD 030437-00-0503. Alternativ A, B og C er universelt godkjente løsninger, testet i henhold til EAD 030437-00-0503. EAD 030437-00-0503 is referred to in: BSN 34.510, DIN 18534, Low Water Load (e.g. private bathroom)

5 CHOOSE PREFERRED CORNER PROFILE A, B OR C VELG HJØRNEPROFIL A, B ELLER C

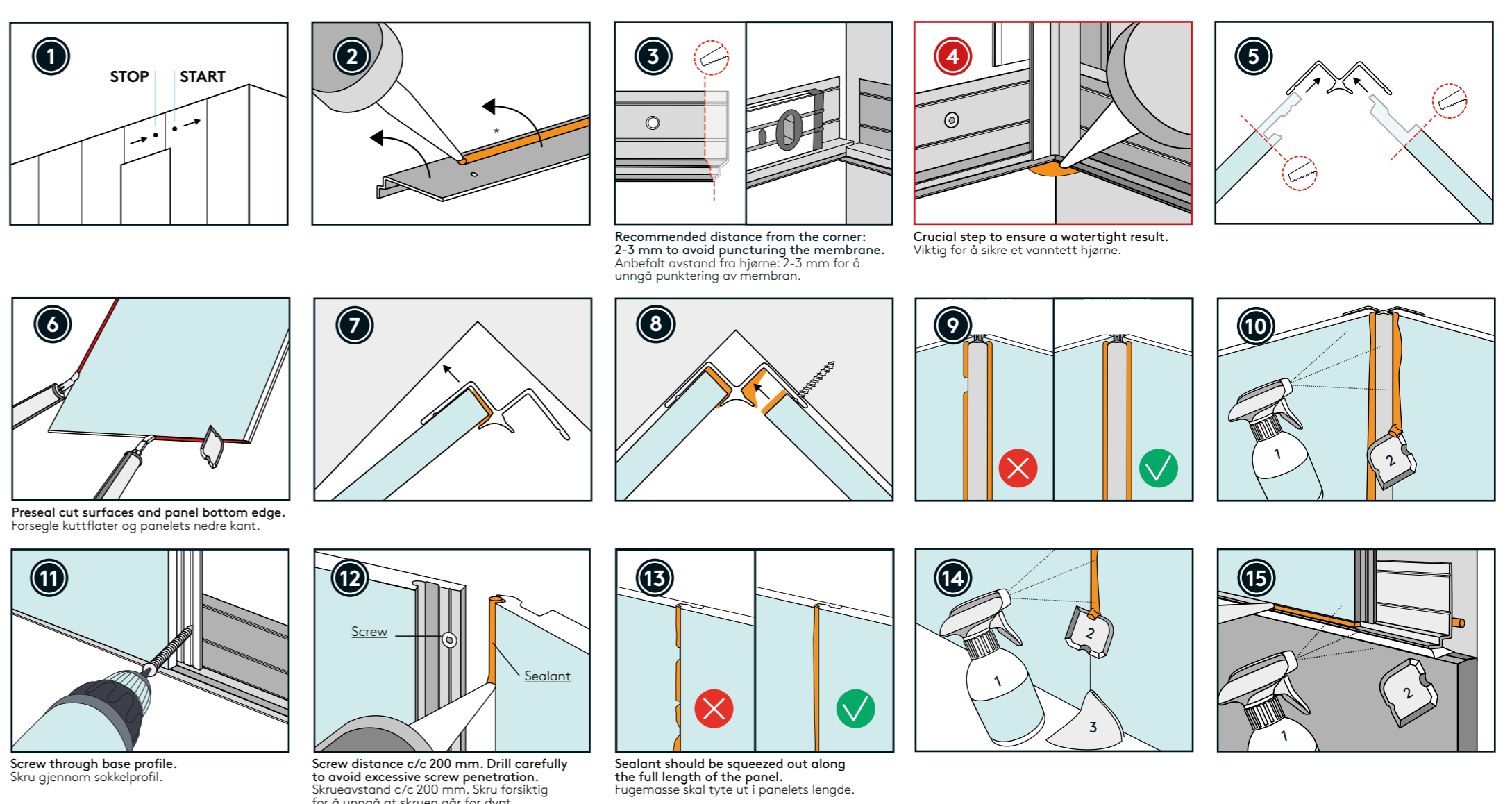
A 2-PART INTERNAL CORNER PROFILE* 2-DELT INNVEDIG HJØRNEPROFIL



B HIDDEN INTERNAL CORNER PROFILE SKJULT HJØRNEPROFIL



C STANDARD INTERNAL CORNER PROFILE STANDARD INNVEDIG HJØRNEPROFIL



REMEMBER! Always clean panels with neutral detergent after installation. This is important to achieve the best result. Extra difficult spots can be removed with Fibo Seal Remover together with Fibo Sponge. HUSK! Vask alltid panelene med nøytral vaskemiddel etter monteringen. Dette er viktig for best mulig kluttesetter. Ekstra vanskelige flekker kan fjernes med Fibo Seal Remover og Fibo Svamp.